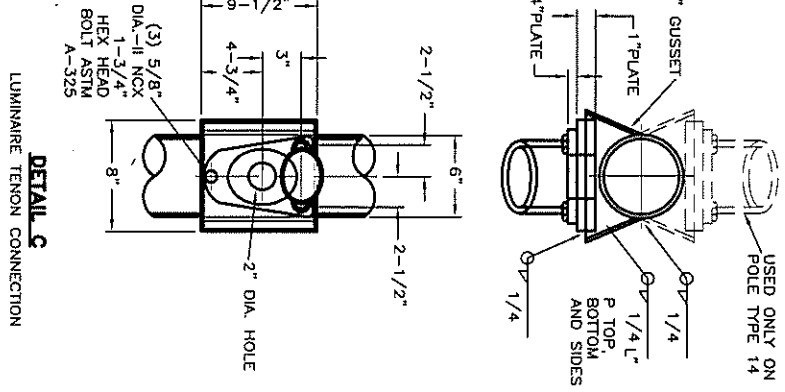
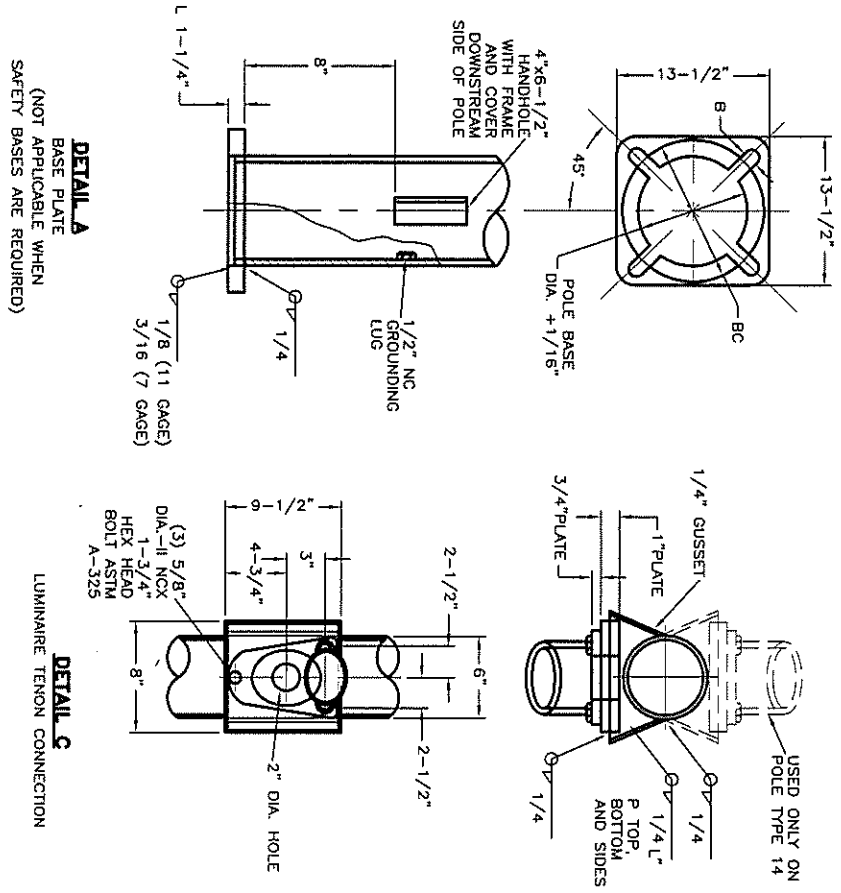
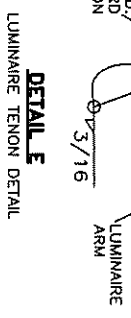
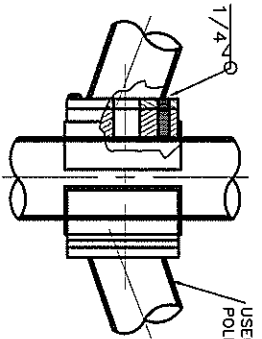
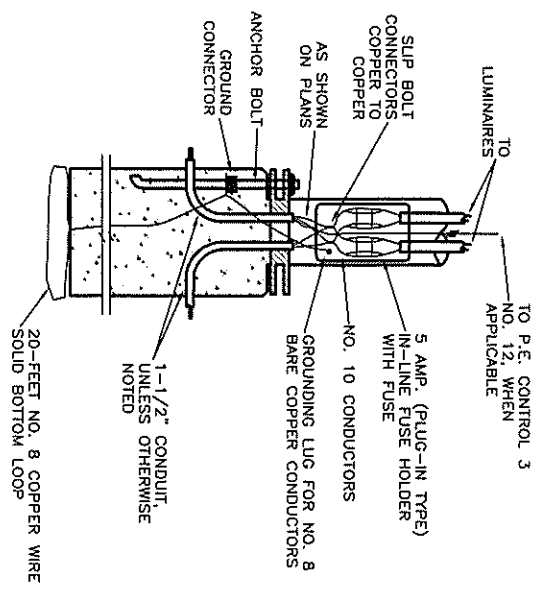


POLE TYPE	B (INCHES)	BC (INCHES)
7	1-1/4"	11
14	1-3/4"	12



WIRING DIAGRAM FOR POLE TYPE 7 & TYPE 14



NO.	REVISION	DATE

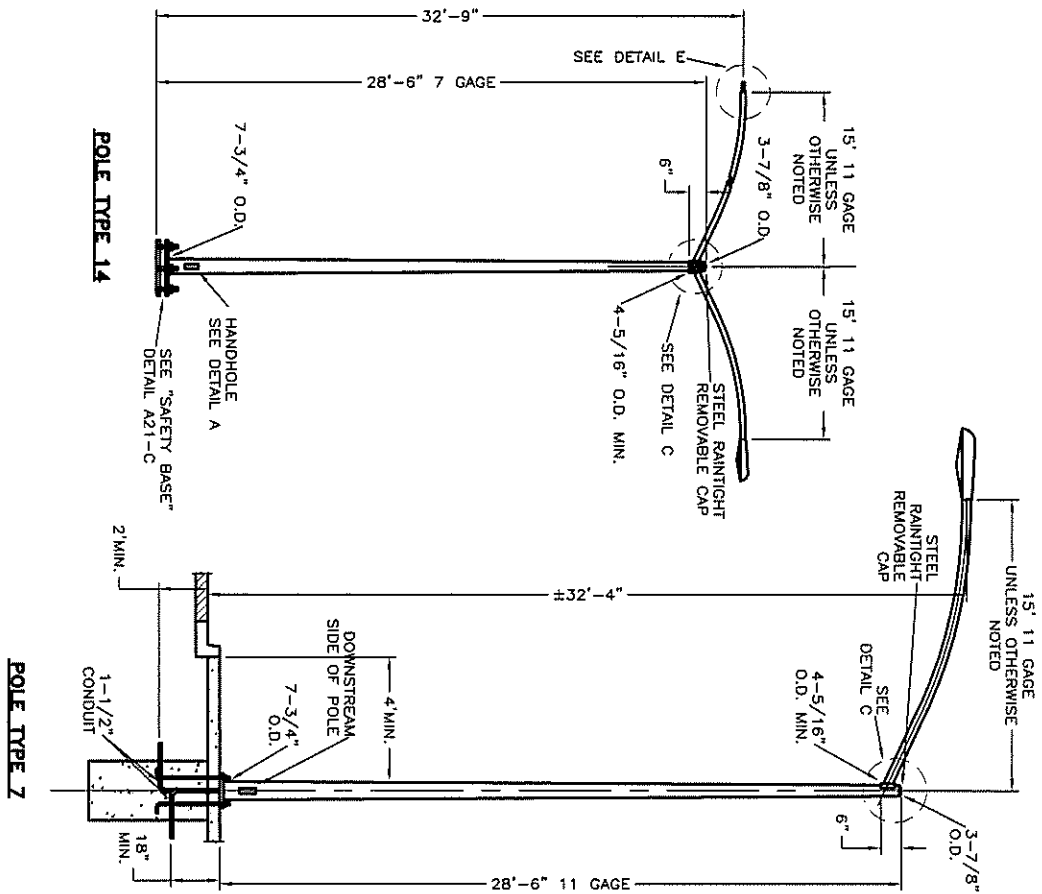
STANDARD DETAIL FOR PUBLIC WORKS CONSTRUCTION

SECTION: DOUGLAS COUNTY

TYPE 7 & 14 POLE LIGHTING & SIGNAL

DATE: JULY 2017

DWG: A21-A



NOTES:

DESIGN CRITERIA
 AASHTO STANDARD SPECIFICATIONS FOR STRUCTURAL SUPPORTS FOR HIGHWAY SIGNS, LUMINAIRES AND TRAFFIC SIGNALS, 4TH EDITION DATED 2001 AND CURRENT INTERIMS (EXCLUDING SECTION 11: FATIGUE DESIGN).

BASIC WIND SPEED = 90 MPH.

GALVANIZING

1. POLES SHALL BE GALVANIZED AS PER ASTM A-123. HARDWARE SHALL BE GALVANIZED AS PER ASTM A-153.

STEEL SIGNAL AND LUMINAIRE ARMS

1. THE LAST 3 INCHES OF THE LUMINAIRE ARM SHALL BE STRAIGHT AND HORIZONTAL WITH LUMINAIRE ATTACHED.

2. CONNECTION BETWEEN ARMS AND POLES SHALL BE MADE BY MEANS OF A RAIN TIGHT SOCKET OR A DESIGN PERMITTING SIMPLE REMOVAL OF THE ARMS.

3. REFER TO DIVISION 10 IN THE DOUGLAS COUNTY DESIGN CRITERIA FOR STREET LIGHT STANDARDS.

ANCHOR BOLTS

1. PROVIDE 4 ASTM A-307 ANCHOR BOLTS, 8 ASTM A-563 HEAVY HEX NUTS, AND 8 ASTM F-436 HARDENED STEEL WASHERS FOR EACH POLE.

2. THREADS MAY BE CUT OR ROLLED. BOLTS SHALL BE GALVANIZED OR PLATED AFTER THREADS ARE FORMED. EACH BOLT SHALL BE PROVIDED WITH 6 INCHES OF THREADS.

STEEL POLES

1. BASE COVERS ARE REQUIRED ON ALL POLES EXCEPT WHERE SAFETY BASE IS SPECIFIED.

2. A REDUCED GAGE FOR SHAFT OF POLE WILL BE ACCEPTABLE ABOVE SIGNAL ARM ATTACHMENT SIMILAR TO POLE TYPE 28.

WELDS

1. LONGITUDINAL WELDS BY SUBMERGED ARC OR ERW CIRCUMFERENTIAL BUTT WELDS SHALL HAVE PERMANENT BACK-UP RINGS. ALL EXPOSED BUTT WELDS SHALL BE GROUND FLUSH.

2. FOR WELD SIZES NOT SHOWN, USE MINIMUM SIZE WELD AS SPECIFIED BY THE LATEST WELDING CODE.

3. BREAK ALL SHARP EDGES FOR WIRE PROTECTION.

FOUNDATIONS

1. AT LOCATIONS WITHOUT CURB, POLES SHALL BE PLACED A MINIMUM DISTANCE OF 6 FEET FROM SHOULDER OR A MINIMUM OF 10 FEET FROM TRAVEL WAY, WHICH EVER IS GREATER.

2. FOR FOUNDATION SEE "PILE FOUNDATION, POLE GROUNDING" DETAIL A31-B.

3. CONCRETE SHALL BE CLASS A OR AA.

SAFETY BASES

1. TYPE 7 AND TYPE 14 POLES SHALL REQUIRE SAFETY BASE ASSEMBLIES UNLESS MOUNTED ON STRUCTURE BEHIND BARRIER RAIL OR NOTED OTHERWISE ON THE PLANS, SEE "SAFETY BASE" DETAIL A21.

NO.	REVISION	DATE

STANDARD DETAIL FOR PUBLIC WORKS CONSTRUCTION

SECTION:
DOUGLAS COUNTY

TYPE 7 & 14 POLE LIGHTING & SIGNAL

DATE:
JULY 2017

DWG:
A21-A