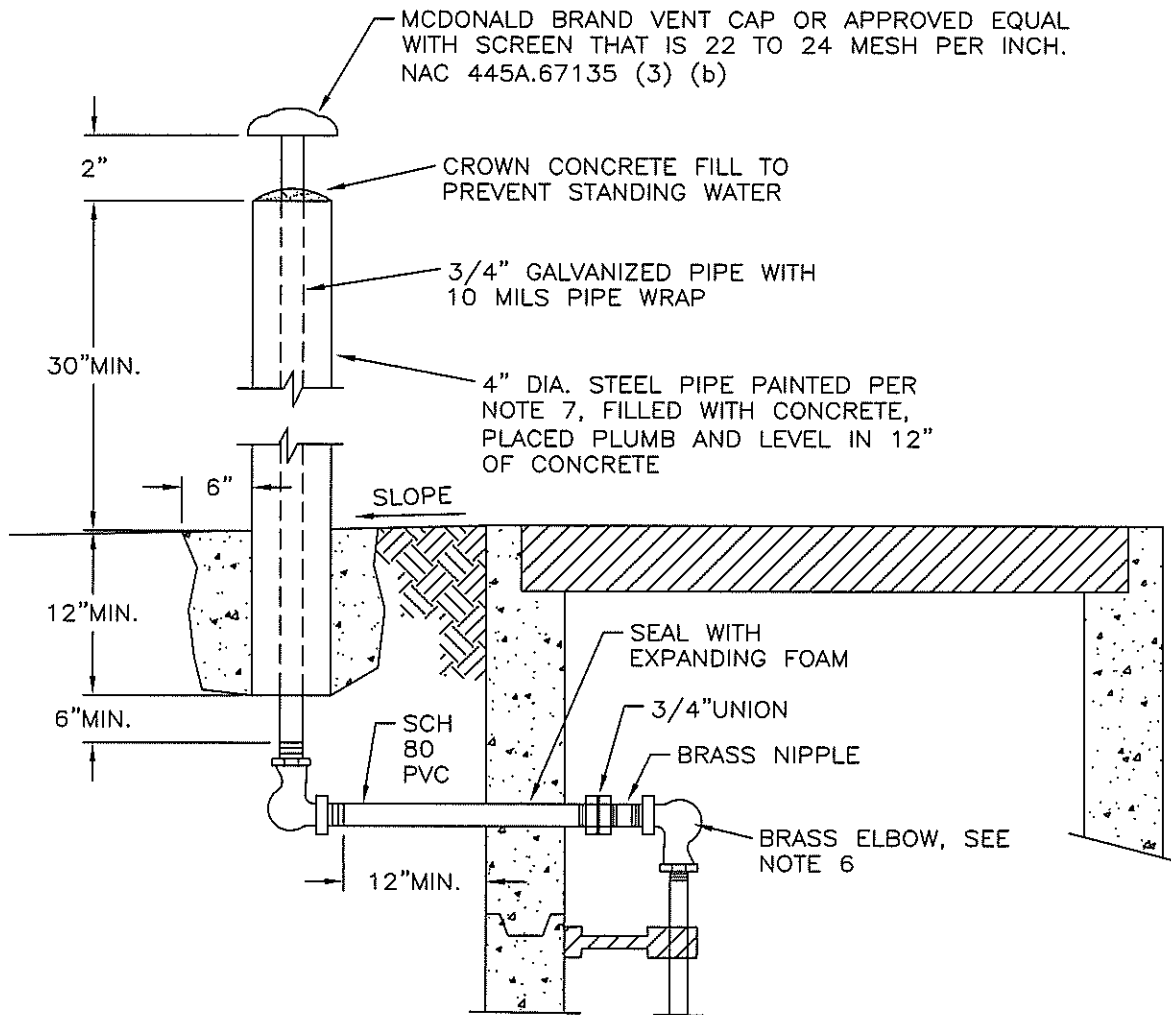


SEE NOTES ON PAGE 2

NO.			REVISION			DATE			STANDARD DETAIL FOR PUBLIC WORKS CONSTRUCTION			SECTION: DOUGLAS COUNTY		
									<h1>COMBINATION AIR VALVE ASSEMBLY</h1>			DATE: DEC. 2018		
												DWG: B15		



LAKE SCENARIO
OR AS APPROVED
BY WATER UTILITY

NOTES:

1. AIR RELEASE VALVES SHALL BE INSTALLED OUTSIDE PAVEMENT SECTION WHENEVER POSSIBLE. SLOPE GROUND AWAY FROM VALVE BOX OR CONSTRUCT CURBING TO PROTECT FROM FLOODING BY SURFACE DRAINAGE.
2. WHEN CONSTRUCTED IN STREET SECTION, CONSTRUCT AIR RELEASE BOX TO SIDE OF ROADWAY AND CONSTRUCT "GOOSE-NECK" ABOVE SURROUNDING GRADE AS DIRECTED BY CONSTRUCTION INSPECTOR.
3. CENTER OR SHIFT ASSEMBLY AS NECESSARY TO ALLOW FOR REMOVAL AND REPAIR. COORDINATE WITH WATER UTILITY.
4. ALL PIPES SHALL BE SLOPED UP TO AIR RELEASE VALVE.
5. INSULATE EXTERIOR OF BOX WITH 2" FOAM INSULATION, COVER WITH VISQUEEN BARRIER, BELOW GRADE.
6. STEEL PIPE PAINT SHALL BE RUST-OLEUM 7400 HIGH GLOSS SAFETY YELLOW ALKYD ENAMEL OR APPROVED EQUAL.

NO.	REVISION	DATE	STANDARD DETAIL FOR PUBLIC WORKS CONSTRUCTION	SECTION: DOUGLAS COUNTY
			<p>COMBINATION AIR VALVE ASSEMBLY</p>	DATE: DEC. 2018
				DWG: B15