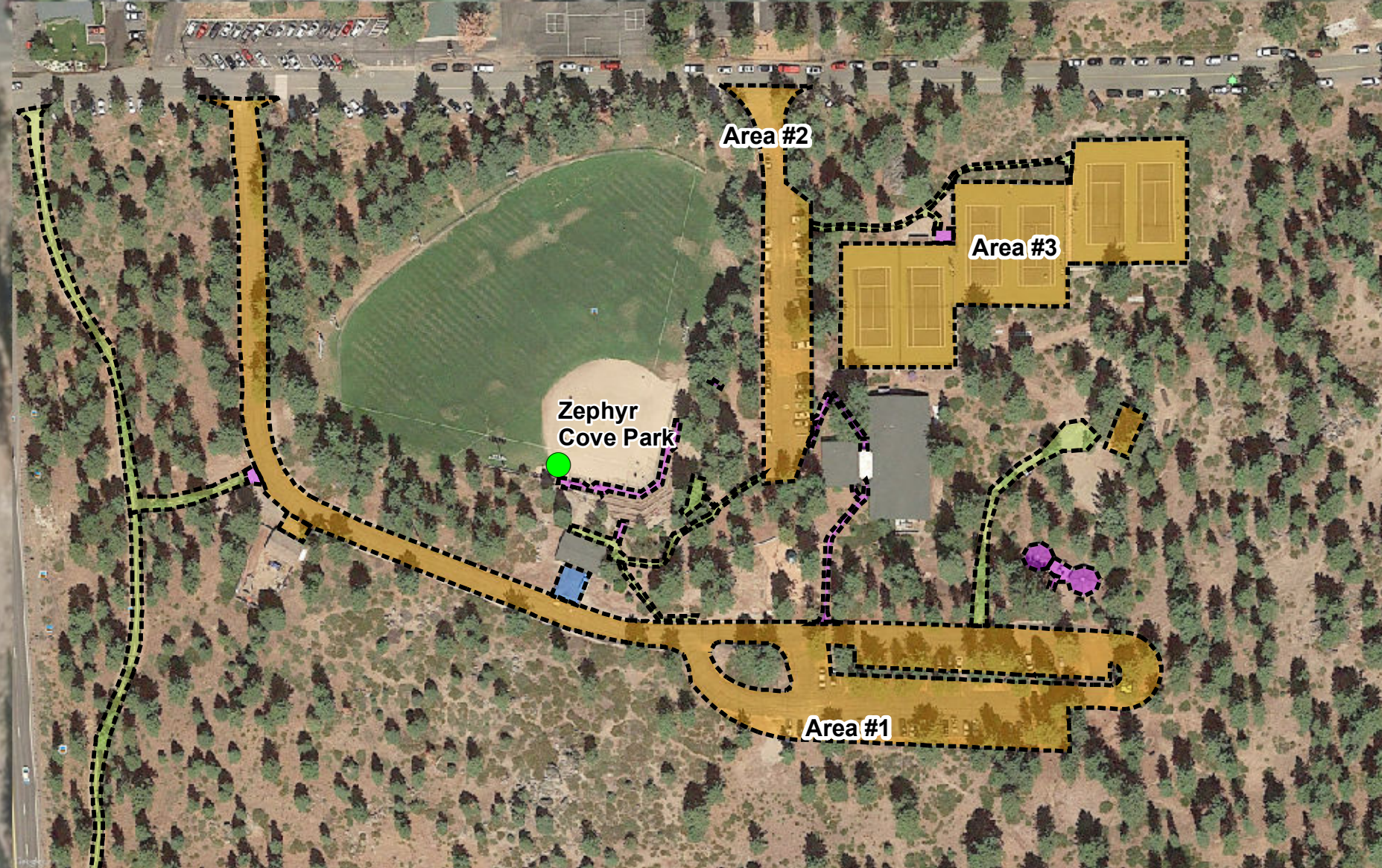


**Pavement**

- AC Pavement
- AC Grindings
- AC Pathway
- Concrete Sidewalk
- Pavers
- Tennis Court



<b>Park:</b> Zephyr Cove Park
<b>Owner:</b> Douglas County
<b>Address:</b> 837A Warrior Way, Zephyr Cove
<b>Pavement Types (Square Feet)</b>
Concrete: 4887.4
AC Pavement #1: 61597.0
AC Pavement #2: 15982.5
AC Pavement #3: 39750.4
Other AC Pavement: 1566.3
AC Pathway: 15539.7
Pavers: 0
<b>Parking Spaces</b>
Standard: 92
Handicapped: 2