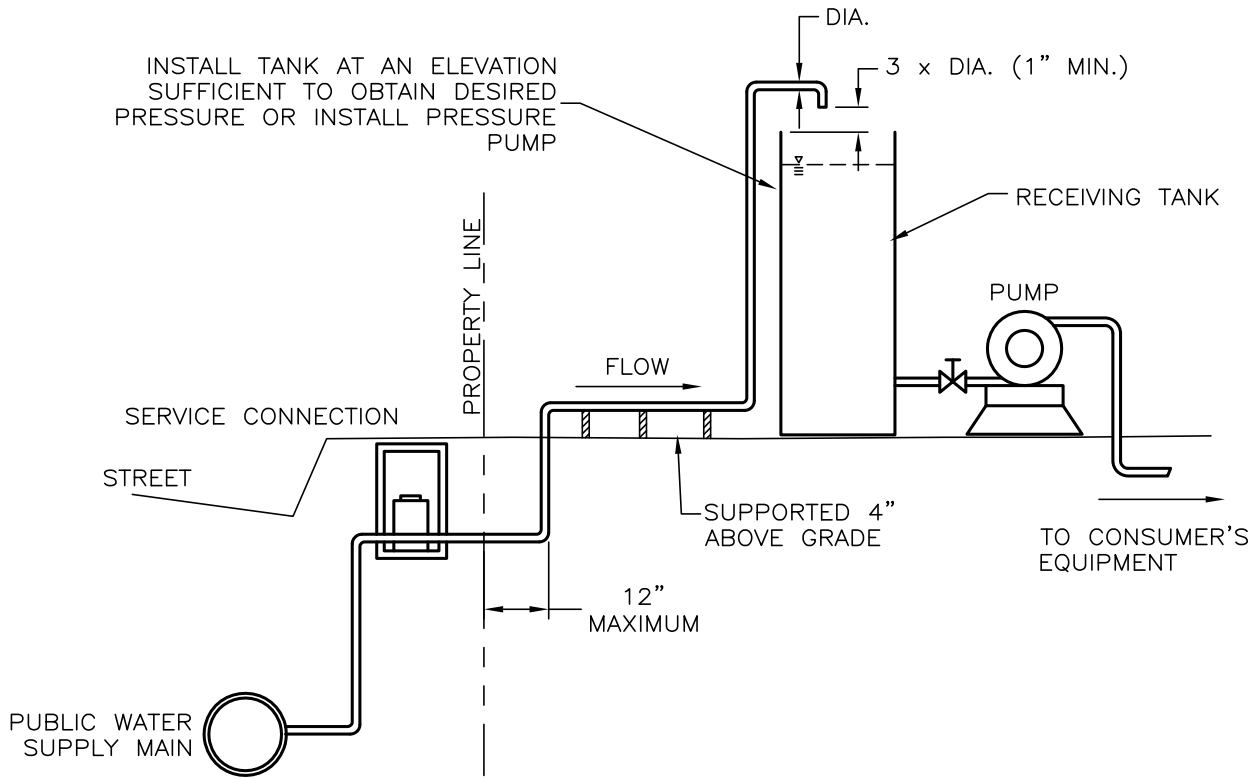


ELEVATION VIEW



NOTES:

1. THE TANK SHOULD BE OF SUBSTANTIAL CONSTRUCTION AND OF A KIND AND SIZE TO SUIT CUSTOMER'S NEEDS. TANK MAY BE SITUATED AT GROUND LEVEL WITH A PUMP TO PROVIDE ADEQUATE PRESSURE OR BE ELEVATED ABOVE GROUND TO OBTAIN PRESSURE.
2. AN AIR GAP (VERTICAL PHYSICAL SEPARATION) OF AT LEAST 2 TIMES THE DIAMETER OF THE SUPPLY PIPE OR A MINIMUM OF 1 INCH MUST BE MAINTAINED BETWEEN THE LOWEST POINT OF THE SUPPLY PIPE AND THE WATER RECEIVING TANK.
3. FREEZE PROTECTION MUST BE PROVIDED FOR THE SUPPLY PIPE RISER THAT FILLS THE RECEIVING TANK AND THE TANK WHERE NECESSARY; DOMESTIC AND FIRE SERVICE MUST HAVE FREEZE PROTECTION, HOWEVER, IRRIGATION FREEZE PROTECTION IS OPTIONAL.
4. THE WATER METER WILL BE LOCATED UPSTREAM OF THE AIR GAP. NO OUTLET, TEE, TAP, CONNECTION TO OR FROM THE SERVICE LINE, OR STOP AND WASTE VALVE IS ALLOWED UPSTREAM ON THE AIR GAP ON THE SERVICE LINE.
5. IF THE AIR GAP IS INSTALLED IN AN AREA WHERE CORROSIVE FUMES OR GASES COULD RENDER THE ASSEMBLY INEFFECTIVE, A REDUCED PRESSURE PRINCIPLE MAY BE REQUIRED UPSTREAM.
6. THE AIR GAP MUST BE READILY ACCESSIBLE FOR VISUAL INSPECTION AND/OR UNIT REPAIR. ACCESS MAY REQUIRE THE REMOVAL OF AN ACCESS PANEL, DOOR, OR SIMILAR OBSTRUCTION.
7. THE AIR GAP MUST BE VISUALLY INSPECTED BY A CALIFORNIA/NEVADA AWWA OR ABPA CERTIFIED BACKFLOW TESTER AT THE TIME OF INSTALLATION, YEARLY THEREAFTER, AND AFTER REPAIRS, WITH THE RESULTS SENT TO THE WATER UTILITY.
8. THE AIR GAP MUST REMAIN OPERATIVE AND EFFECTIVE THROUGHOUT THE YEAR WITHOUT BEING BYPASSED. THE WATER UTILITY MUST BE NOTIFIED OF ANY BYPASSES USED FOR WHATEVER REASON.

NO.	REVISION	DATE	STANDARD DETAIL FOR PUBLIC WORKS CONSTRUCTION	SECTION: DOUGLAS COUNTY
			AIR GAP SEPARATION	DATE: JULY 2017
				DWG: B18