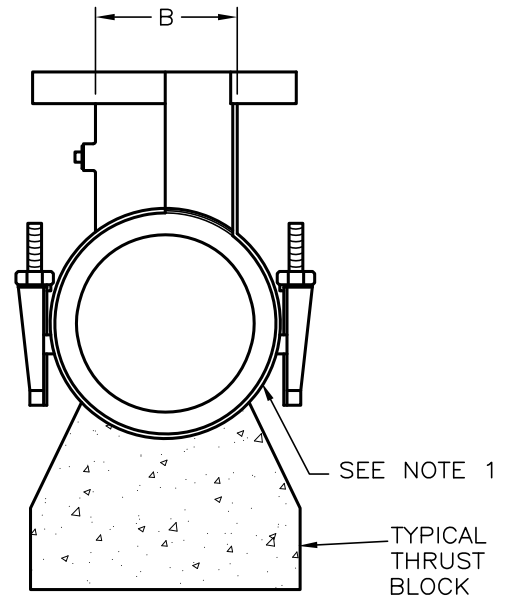


TYPICAL THRUST BLOCKING



SECTION A-A

MATERIAL SPECIFICATIONS:

SHELL: 304 STAINLESS STEEL

LUGS: 304 STAINLESS STEEL

BOLTS, WASHERS AND NUTS: TYPE 304 STAINLESS STEEL, 5/8" DIAMETER.

GASKETS: NITRILE BUTADIENE RUBBER (NBR) FOR WATER SERVICE. ASTM D2000-MBC 610 FULL GASKET. 360° PIPE COVERAGE.

FLANGE: 304 STAINLESS STEEL OR HIGH TENSILE DUCTILE (NODULAR) IRON, ASTM A536-80, GRADE 65-45-12.

PRESSURE RATING:

- 200 PSI FOR 4-INCH THROUGH 8-INCH.
- 175 PSI OR HIGHER FOR 8-INCH THROUGH 24-INCH, OR AS APPROVED BY WATER UTILITY.

NOTES:

1. MATERIAL USED FOR THRUST BLOCKING SHALL NOT PREVENT ACCESS TO THE BOLT ASSEMBLY.
2. MINIMUM DISTANCE BETWEEN TAPS, COLLARS, JOINTS, SERVICE TAPS, ETC, SHALL BE 3 x DIA OF PIPE SIZE MIN.
3. SADDLE TO BE HYDROSTATICALLY TESTED PER MANUFACTURER'S RECOMMENDATIONS AND AWWA C223-02.
4. ANY HOT TAPS GREATER THAN 2-INCHES WILL BE BY AN APPROVED CONTRACTOR UNLESS WAIVED BY THE WATER UTILITY.
5. FOR FULL BODY TAPPING SLEEVES: MECHANICAL JOINT TAPPING SLEEVE SHALL BE DUCTILE IRON AND HAVE DI MECHANICAL JOINT END SEALS CONFORMING TO AWWA C111, WITH OUTLET FLANGE CONFORMING TO AWWA C207, CLASS D, WITH ANSI 150-LB DRILLING RECESSED FOR TAPPING SLEEVE. TAPPING SLEEVE SHALL FIT AWWA STANDARD 1908, CLASS AB-CD CAST IRON PIPE. MANUFACTURED BY CLOW, MUELLER, OR APPROVED EQUAL BY WATER UTILITY. ACCEPTABLE FOR CAST IRON AND DUCTILE IRON PIPE.
6. ON AC PIPE 2-INCH TAPPING SLEEVE REQUIRED DETAIL PER DESIGN ENGINEER, 2-INCH SERVICE SADDLE REQUIRED FOR ALL OTHER SERVICE LATERALS.

NOM. FLANGE	A	B	C	NO. BOLTS
4	4	5-1/32	16	10
6*	4-1/2	7-1/32	16	10
8*	4	9-1/32	20	14
10	5-1/2	11-1/32	24	16
12**	6-1/2	13-1/32	30	30

* TAPPING SLEEVES IN THE 24" NOMINAL PIPE SIZE RANGE WITH 6" OR 8" FLANGES ARE 24" LONG (C DIMENSION) AND HAVE 24" BOLTS.

** TAPPING SLEEVES IN THE 12" AND 14" NOMINAL PIPE SIZE RANGE WITH 12" FLANGE ARE 24" LONG AND HAVE 24" BOLTS.

NO.	REVISION	DATE	STANDARD DETAIL FOR PUBLIC WORKS CONSTRUCTION	SECTION: DOUGLAS COUNTY
			TAPPING SLEEVE	DATE: JULY 20173
				DWG: B09